



Mouse anti Keratin 8 (pS431) Monoclonal Antibody

Alternative Name(s): CK-8; cytokeratin 8; KRT8

Order Information

- **Description:** Cytokeratin 8 (pS431)
- **Catalogue:** 606-480
- **Lot:** See label
- **Size:** 100ug/200ul
- **Host:** Mouse
- **Clone:** ABM271
- **Application:** IHC(P), WB
- **Reactivity:** Hu,Ms

ANTIGEN PREPARATION

A synthetic peptide of Cytokeratin 7 protein with a phosphorylation site Serine 431.

BACKGROUND

Keratins are cytoplasmic intermediate filament proteins preferentially expressed by epithelial tissues in a site-specific and differentiation-dependent manner. The complex network of keratin filaments in stratified epithelia is tightly regulated during squamous cell differentiation. Keratin 8 and 18 (K8/18) phosphorylation, such as K8 (S23, S73, S431) and K18 (S33, S52), plays a significant and site-specific role in regulating keratin filament organization, association with binding proteins, and modulation of cell cycle progression. Keratin hyperphosphorylation correlates with exposure to a variety of stresses in cultured cells and in mouse models of liver, pancreatic, and gallbladder injury, and it is found in association with mouse and human Mallory bodies. The increase of site-specific keratin phosphorylation in liver disease might be a progression marker

PURIFICATION

The mouse IgG is purified by Protein A-Affinity Chromatography according to Isotyping

FORMULATION

This affinity purified antibody is supplied in sterile Tris-buffered saline (pH7.2) containing antibody stabilizer

SPECIFICITY

This antibody recognizes human Cytokeratin 8 (pS431) protein with a phosphorylation site serine 431.

STORAGE

The antibodies are stable for 24 months from date of receipt when stored at -20°C to -70°C . The antibodies can be stored at 2°C - 8°C for three month without detectable loss of activity. Avoid repeated freezing-thawing cycles.

APPLICATIONS/SUGGESTED WORKING DILUTIONS*

- Western Blot: 0.1-1 $\mu\text{g/ml}$
- ELISA: 0.01-0.1 $\mu\text{g/ml}$
- Immunoprecipitation: 2-5 $\mu\text{g/ml}$
- IHC: 2-10 $\mu\text{g/ml}$
- Flow cytometry: Not tested
- Molecular Weight: 52.5
- Positive Control: Kidney Tissue
- Cellular Location: Cell Membrane

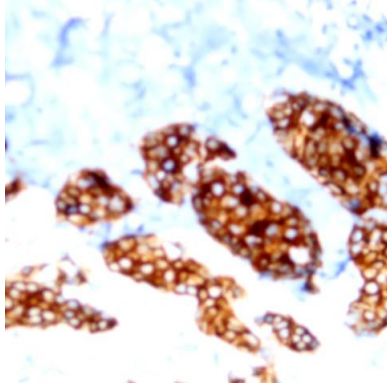
*Optimal dilutions should be determined by researchers for the specific applications.

FOR RESEARCH USE ONLY.

AbboMax, Inc 2528 Qume Drive, Suite 8, San Jose, California 95131, USA
1 408-573-1898 (Tel). 1 408-573-1858 (Fax). www.abbomax.com info@abbomax.com



DATA ATTACHMENTS



Immunohistochemistry: Human breast carcinoma (FFPE) stained with Mouse anti- Cytokeratin (pS431) (Cat# 606-480) at 1:200 for 10 min @ RT. Staining of formalin-fixed tissue requires boiling tissue sections in 10 mM Citrate Buffer, pH 6.0 for 10 min followed by cooling at RT for 20 min.

REFERENCES

FOR RESEARCH USE ONLY.

AbboMax, Inc 2528 Qume Drive, Suite 8, San Jose, California 95131, USA
1 408-573-1898 (Tel). 1 408-573-1858 (Fax). www.abbomax.com info@abbomax.com